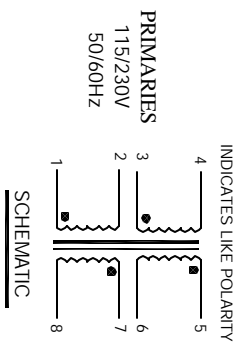


The information contained in this drawing is the sole property of CWS Specialist and reproduction in part or whole without written permission is prohibited.



WHERE SHOWN, USING A PERMANENT MARKING METHOD
5 MARK PART NUMBER AND REVISION

CONTACT CWS FOR MORE INFORMATION
BUT NOT CERTIFIED OR TESTED BY THESE AGENCIES
DESIGNED TO MEET UL, CSA, TUV STANDARDS,
CONCENTRIC CONSTRUCTION

4 CONSTRUCTION:

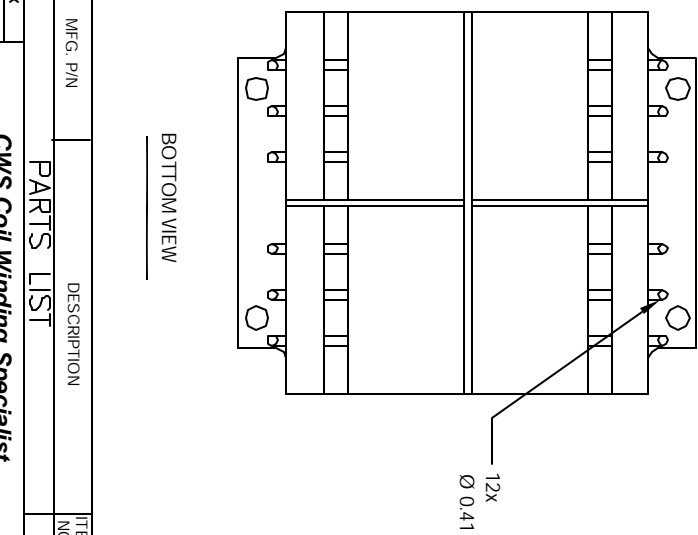
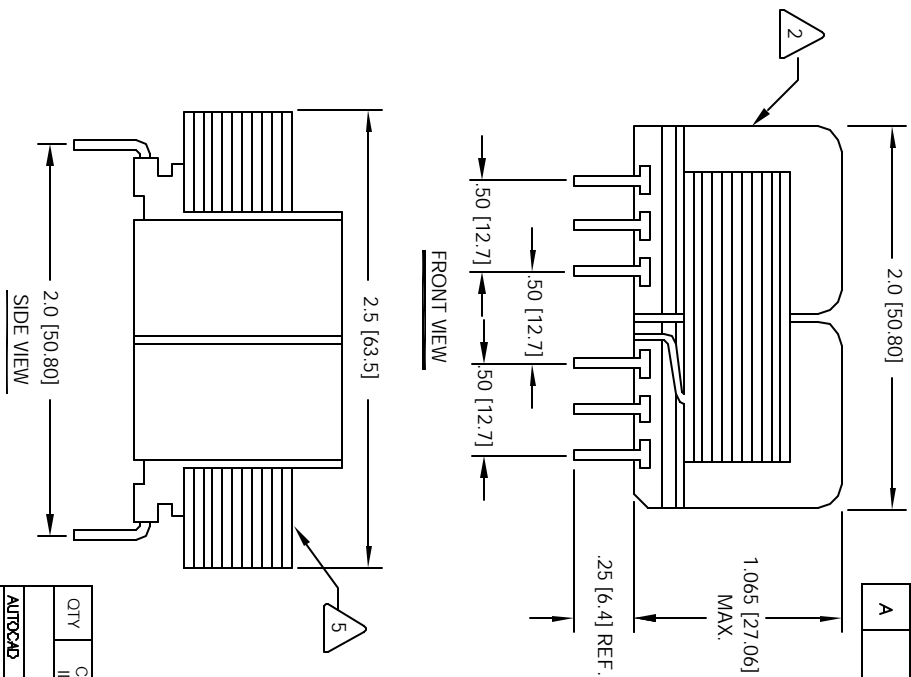
PRIMARY INPUT VOLTAGE (2 + 3) = 230 VAC, 50/60 Hz
PRIMARY INPUT VOLTAGE (1 + 3, 4 + 2) = 115 VAC, 50/60 Hz
PARALLEL CONNECTION (5 + 7, 6 + 8) = 6.3V @ 1.8A
SERIES CONNECTION (6 + 7) = 12.6V C.T. @ 900 mA
SECONDARY RMS RATING :-
VOLT-AMPERES RATING = 12 VA
SPECIFICATIONS @ 25°C

1 WIRE: UL RECOGNIZED 130°C RATED MAGNET WIRE
CWS BYTE-MARK OR OTHER APPROVED PART

2 CORE: 50 Hz / 60 Hz LAMINATION

BOBBIN RATING CLASS B (130°C) REQUIRED
1 MATERIAL: UL RECOGNIZED 94V-0 FOR FLAMMABILITY

NOTES: UNLESS OTHERWISE SPECIFIED,
READ NOTES FROM BOTTOM TO TOP



UNLESS OTHERWISE SPECIFIED	
DIMENSIONING AND TOLERANCES PER ANSI Y14.5M	
ALL DIMENSIONS ARE IN INCHES AND DIMETERS	
TOLERANCE INCHES:	$\pm .015$ <math>\pm .010
TOLERANCE METERS:	$\pm .005$ <math>\pm .004
ANGULAR DIMENSIONS:	$\pm .5^\circ$ <math>\pm .2^\circ
ASSEMBLY:	$\pm .010$
DO NOT SCALE DRAWING	

QTY	CODE	IDENT	MFG. P/N	DESCRIPTION	ITEM NO.
AUTOCAD			X		
SOLIDWORKS					
SIGN					
DRAWN	TKK	4/15/05		CWS Coil Winding Specialist	
CHKD	JLU	4/15/05		Power Transformer	
ENGR.	K.SJM	4/15/05		EPL Series, 12VA, 1.065" High	
APPR.	JLU	4/15/05			
SCALE			Z=1		
REV			A		

REV	ECN	DESCRIPTION	SIGN & DATE		
			BY	DATE	CHK
A		PRODUCTION RELEASE	TKK	4/15/05	JLU
				4/15/05	